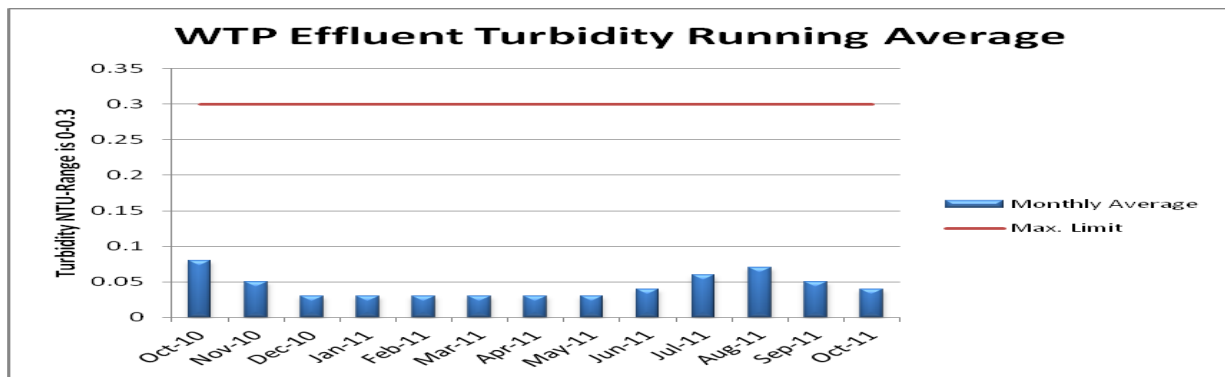
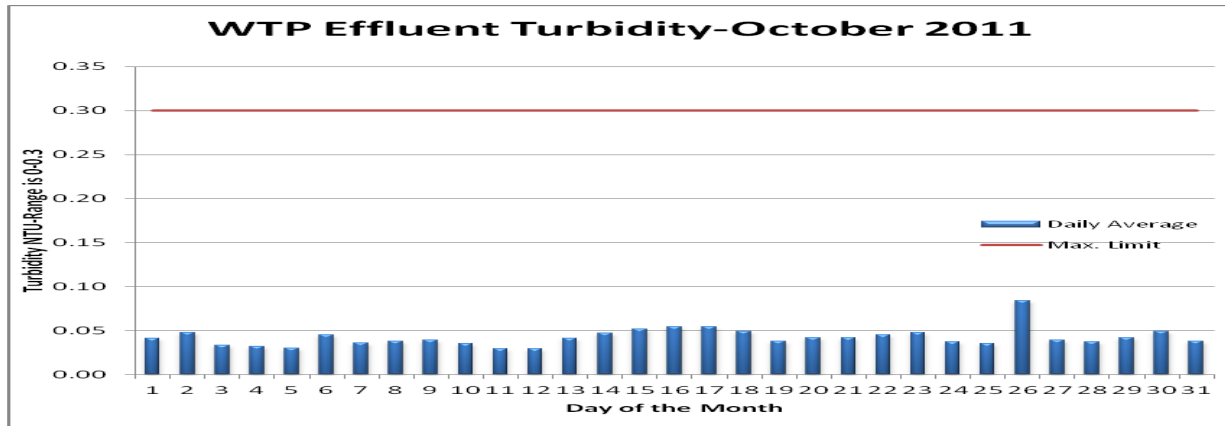
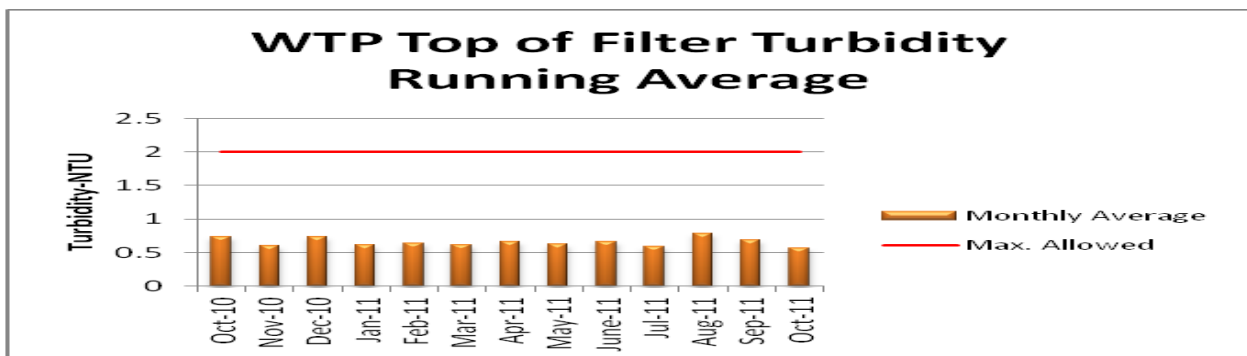
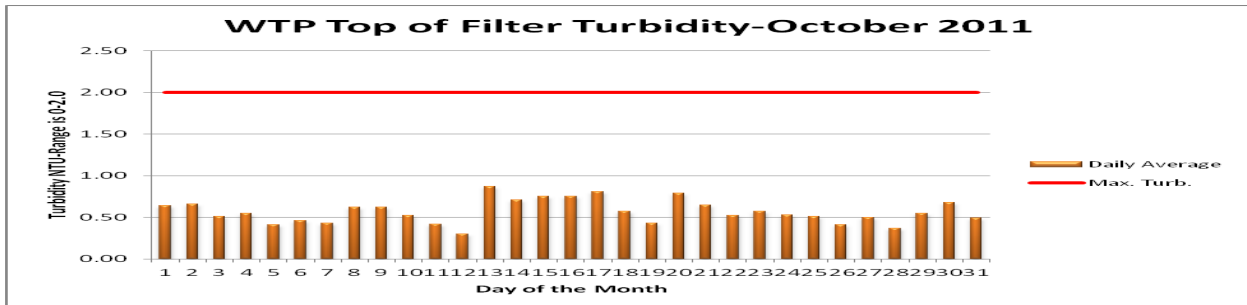


# Water Treatment Plant

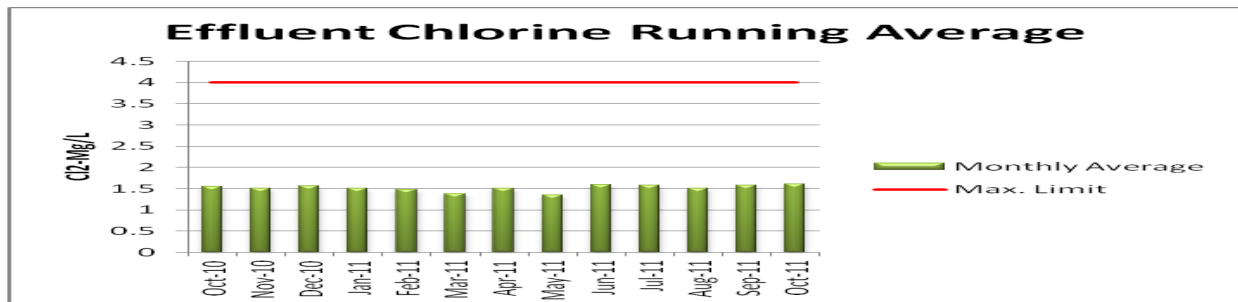
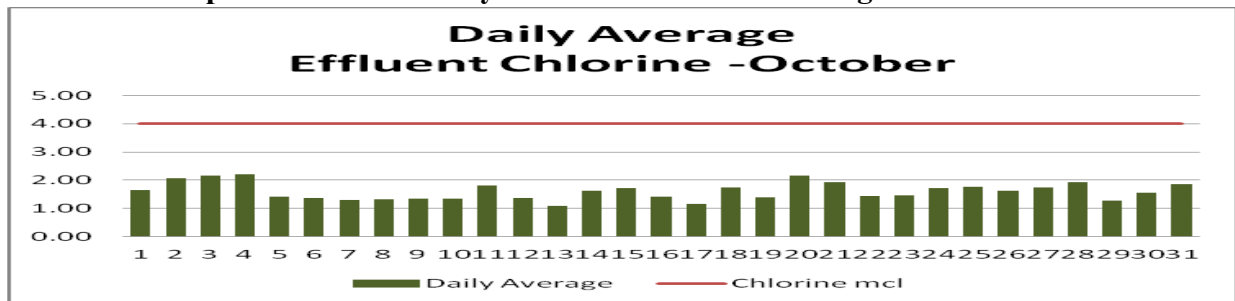


↖ Effluent is the term for the Finished Water Leaving the Plant. Turbidity is the Measurement of the Clarity of the Water.

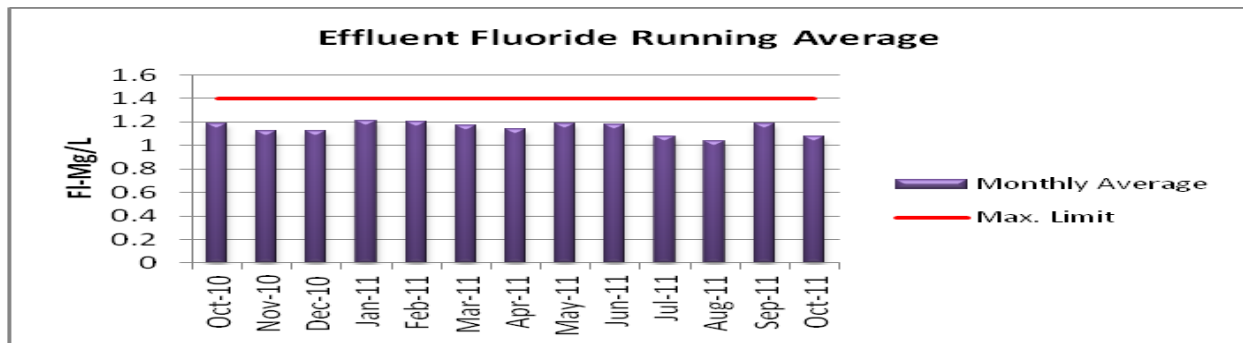
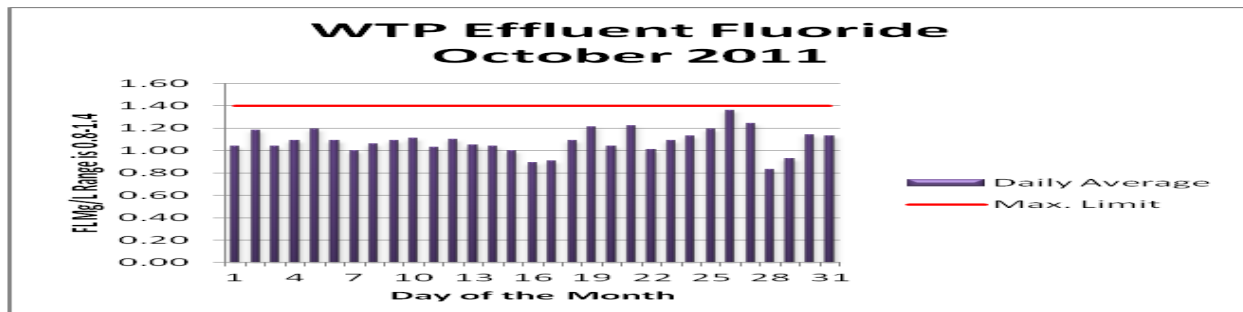


# Water Treatment Plant

The "Top of Filter" Turbidity is the Measurement during the Treatment Process.

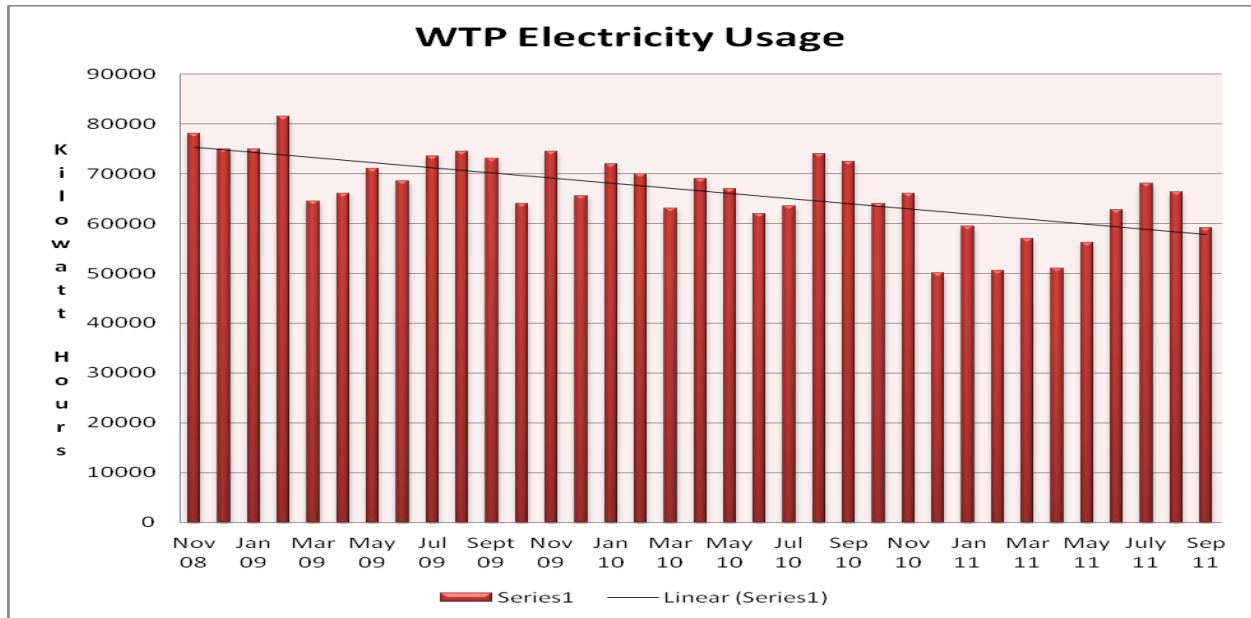


Chlorine is used for Disinfection  
The recommended dosage of Chlorine is 1.0 Mg/L



Fluoride is Used for the Prevention of Cavities in Teeth  
The recommended dosage of Fluoride is 1.0 Mg/L

# Water Treatment Plant



2 Years of Data Showing a Reduction in Power Usage.  
Data for May will be on next month's graph.

The new water plant transformer is now on line.

