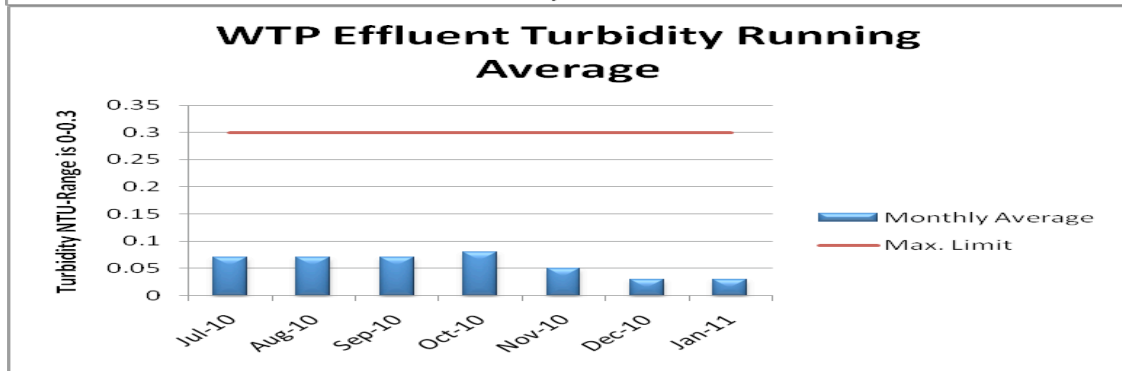
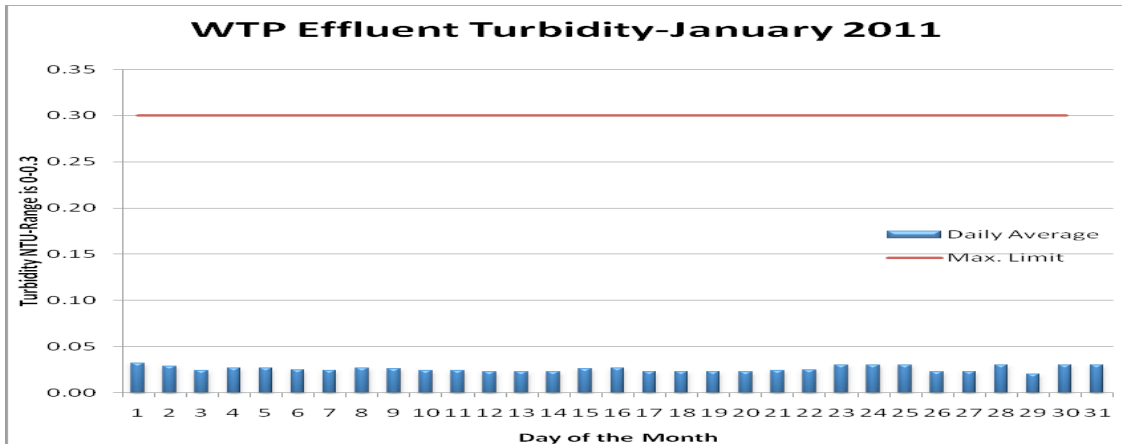
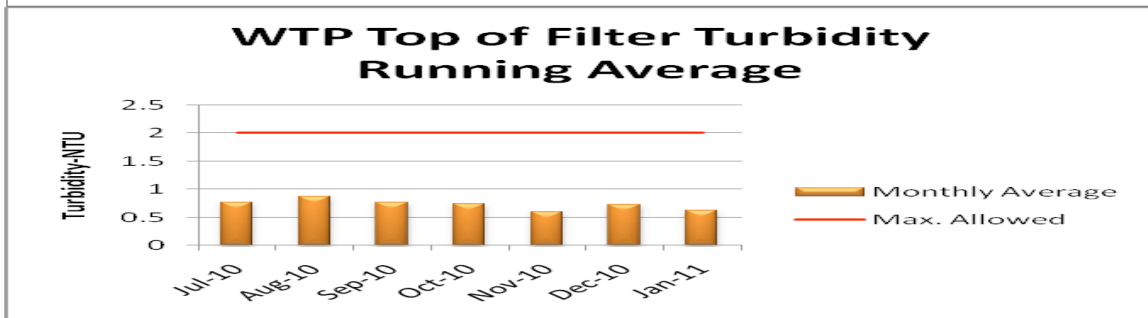
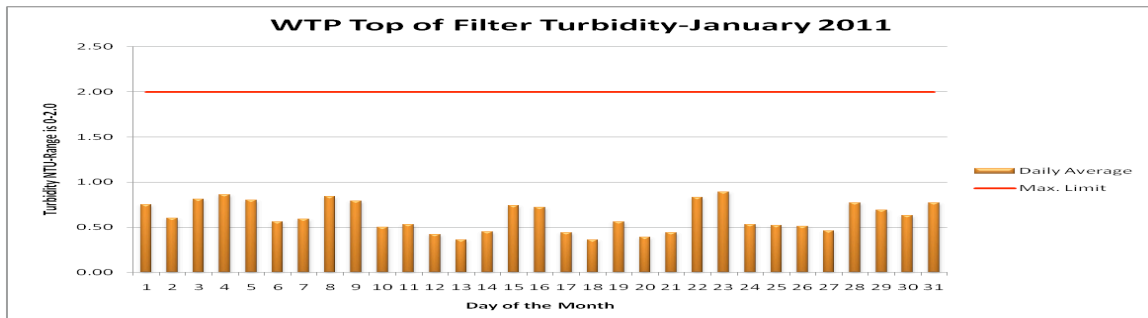


# Water Treatment Plant

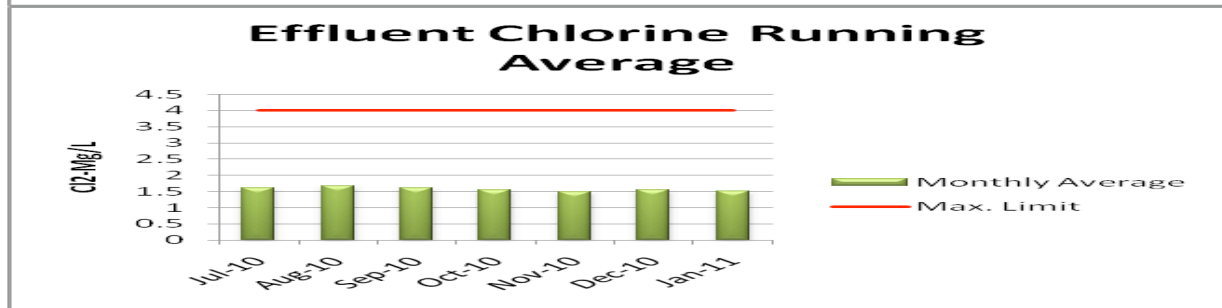
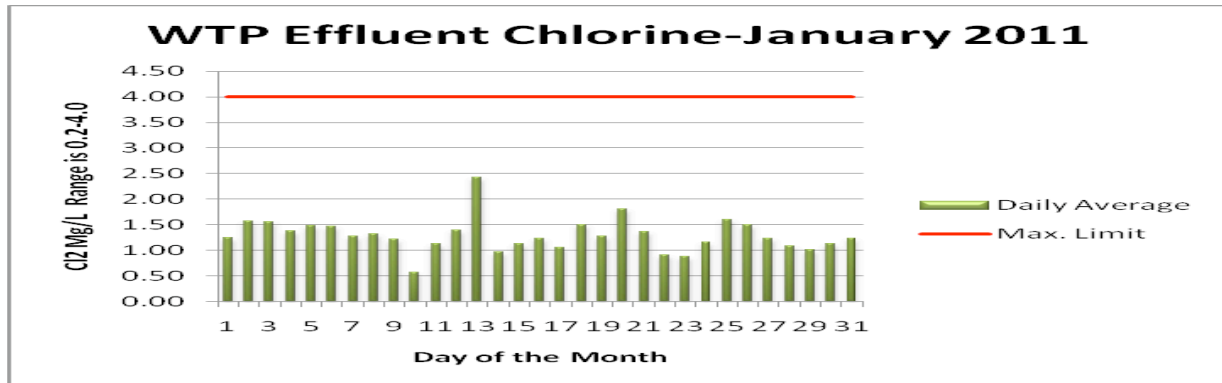


**Effluent is the term for the Finished Water Leaving the Plant. Turbidity is the Measurement of the Clarity of the Water.**

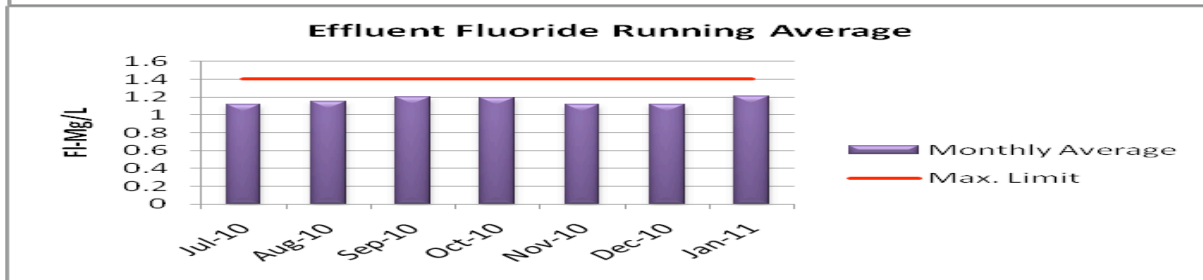
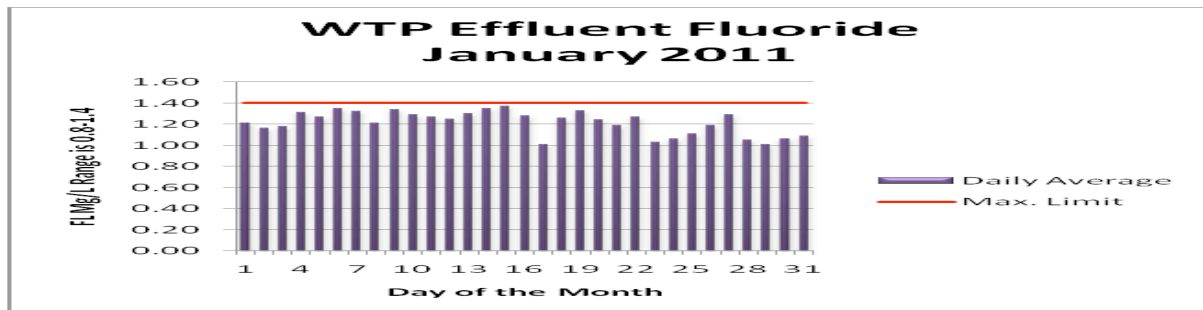


**The "Top of Filter" Turbidity is the Measurement during the Treatment Process.**

# Water Treatment Plant

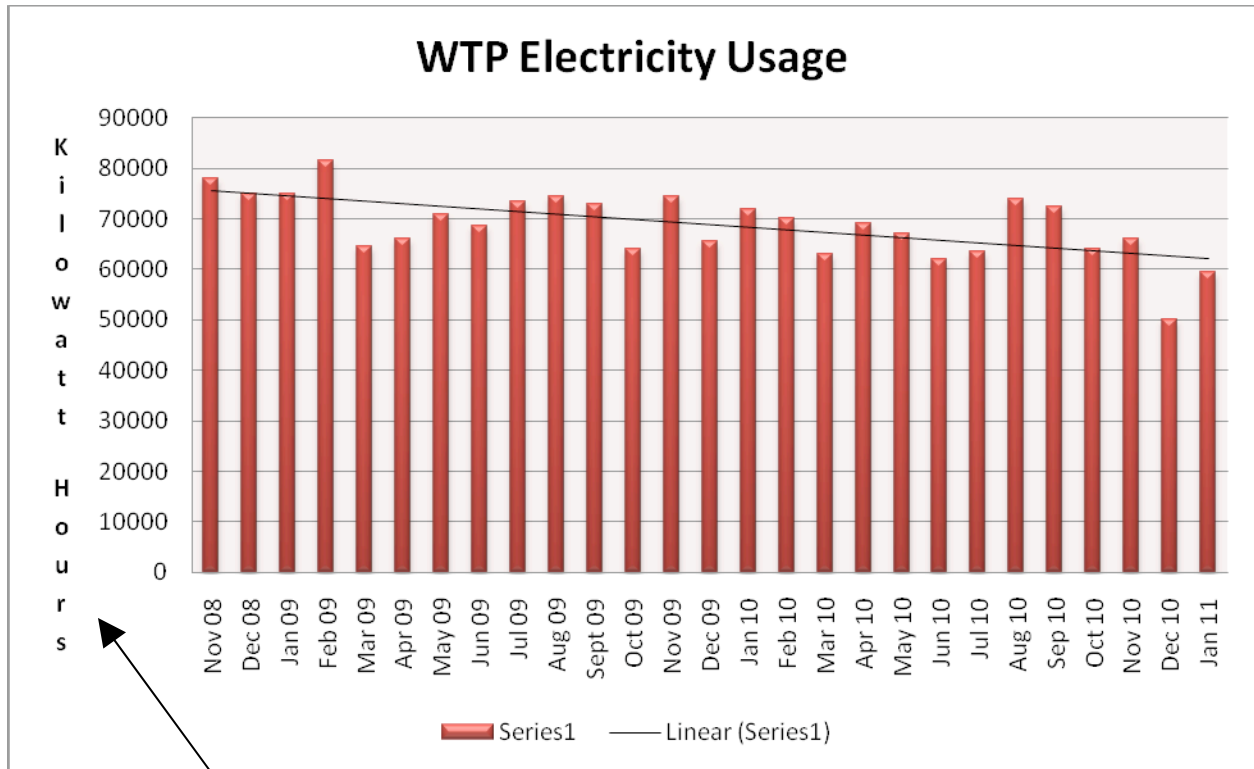


Chlorine is Used for Disinfection  
The recommended dosage of Chlorine is 1.0 Mg/L



Fluoride is Used for the Prevention of Cavities in Teeth  
The recommended dosage of Fluoride is 1.0 Mg/L

# Water Treatment Plant



2 Years of Data Showing a Reduction in Power Usage

High Service Pumps and Variable Speed Drives

