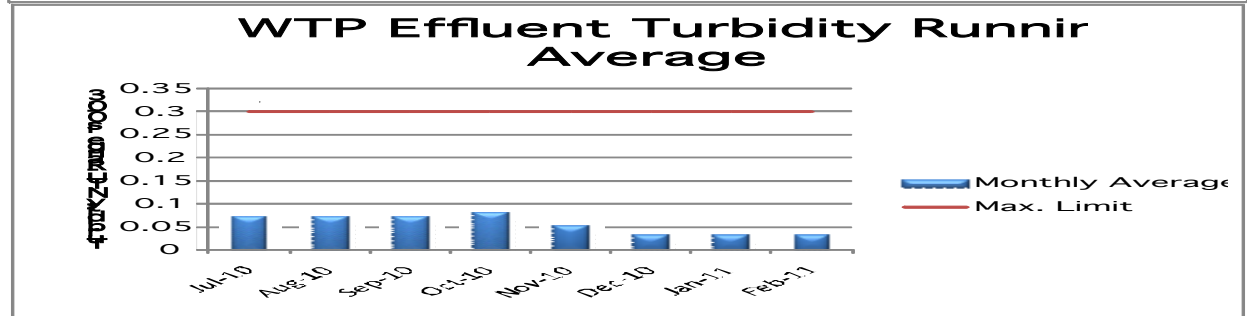
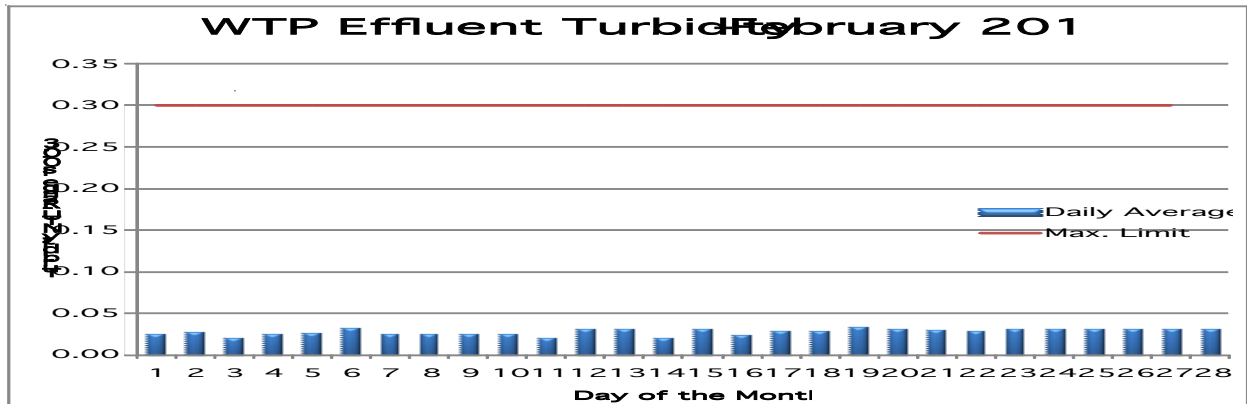
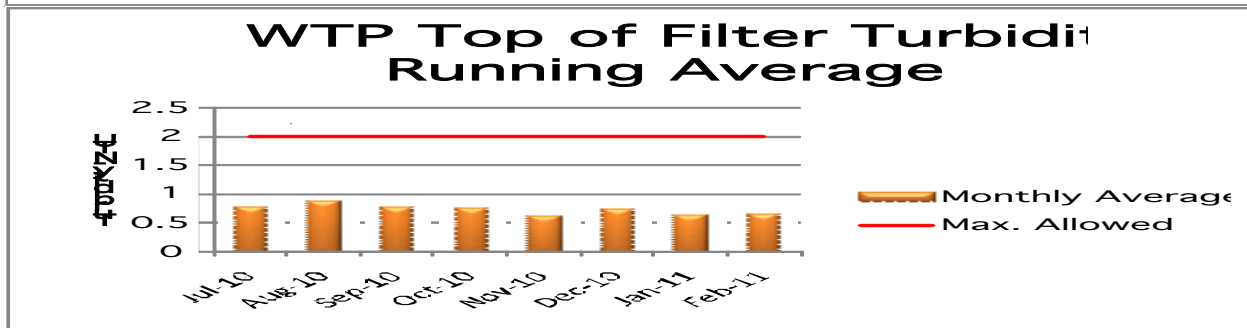
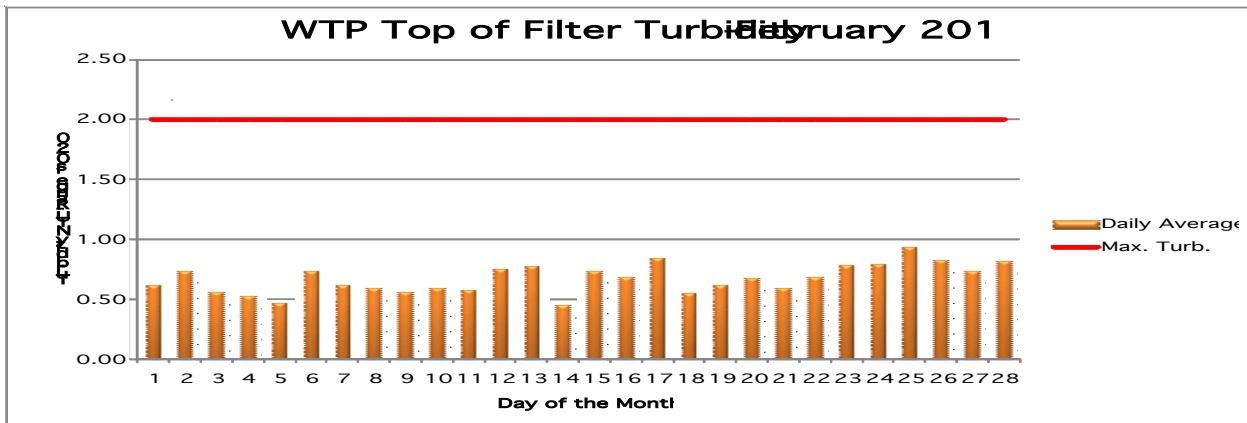


# Water Treatment Plant

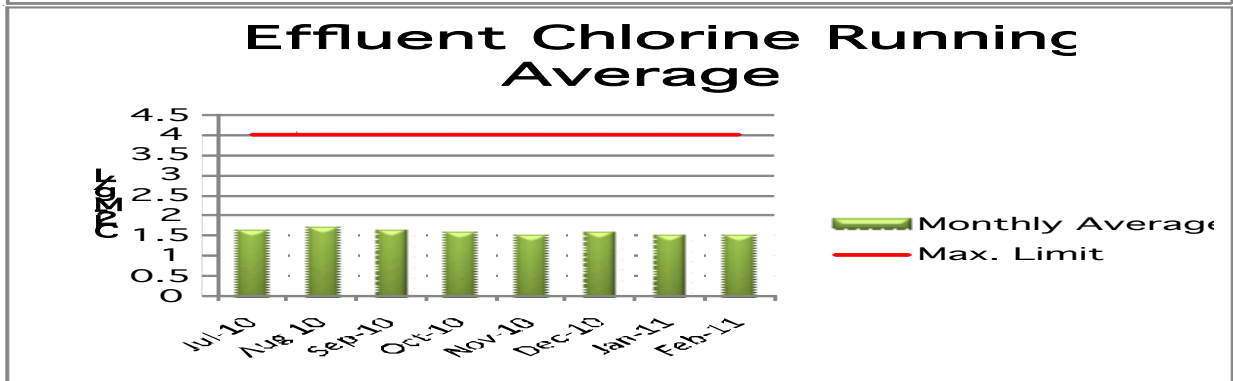
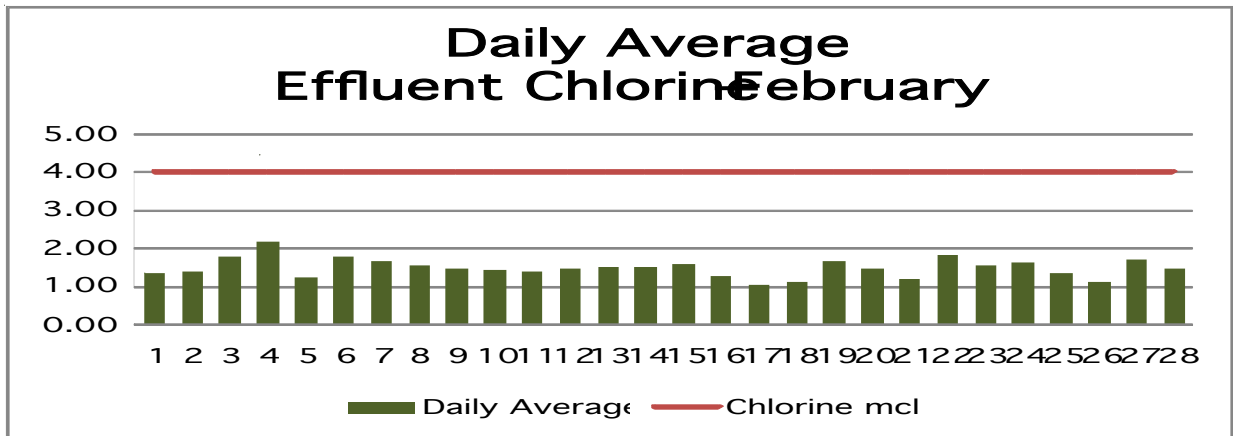


▶ Effluent is the term for the Finished Water Leaving the Plant. Turbidity is the Measurement of the Clarity of the Water.

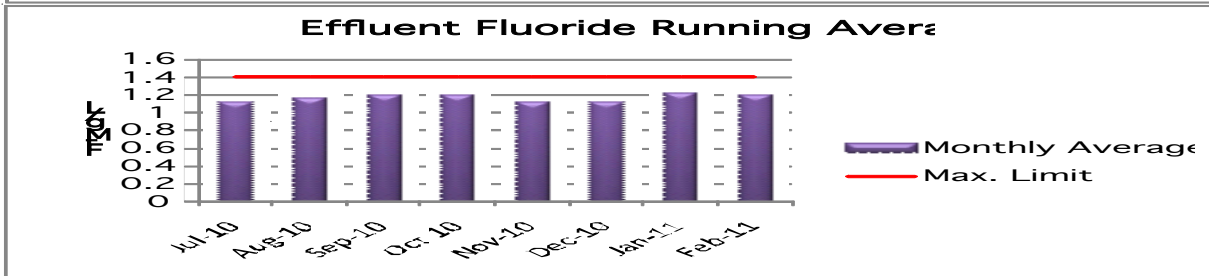
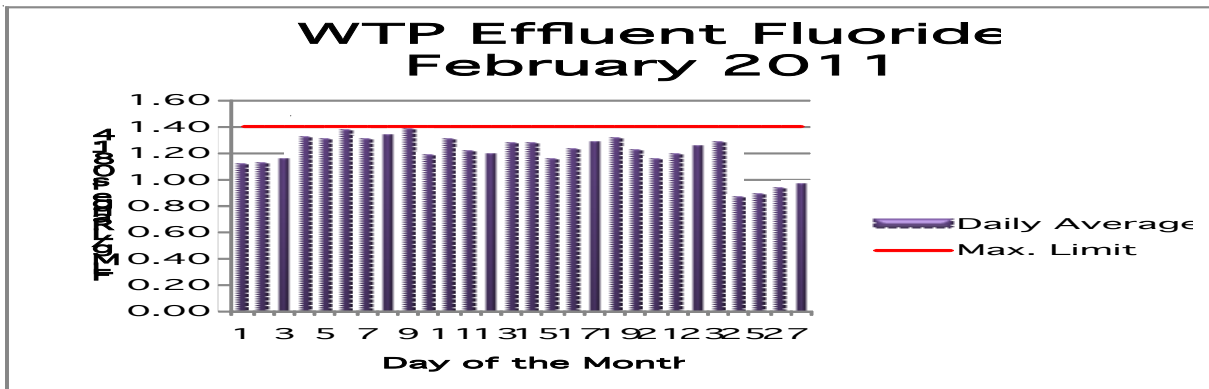


▶ The "Top of Filter" Turbidity is the Measurement during the Treatment Process.

# Water Treatment Plant

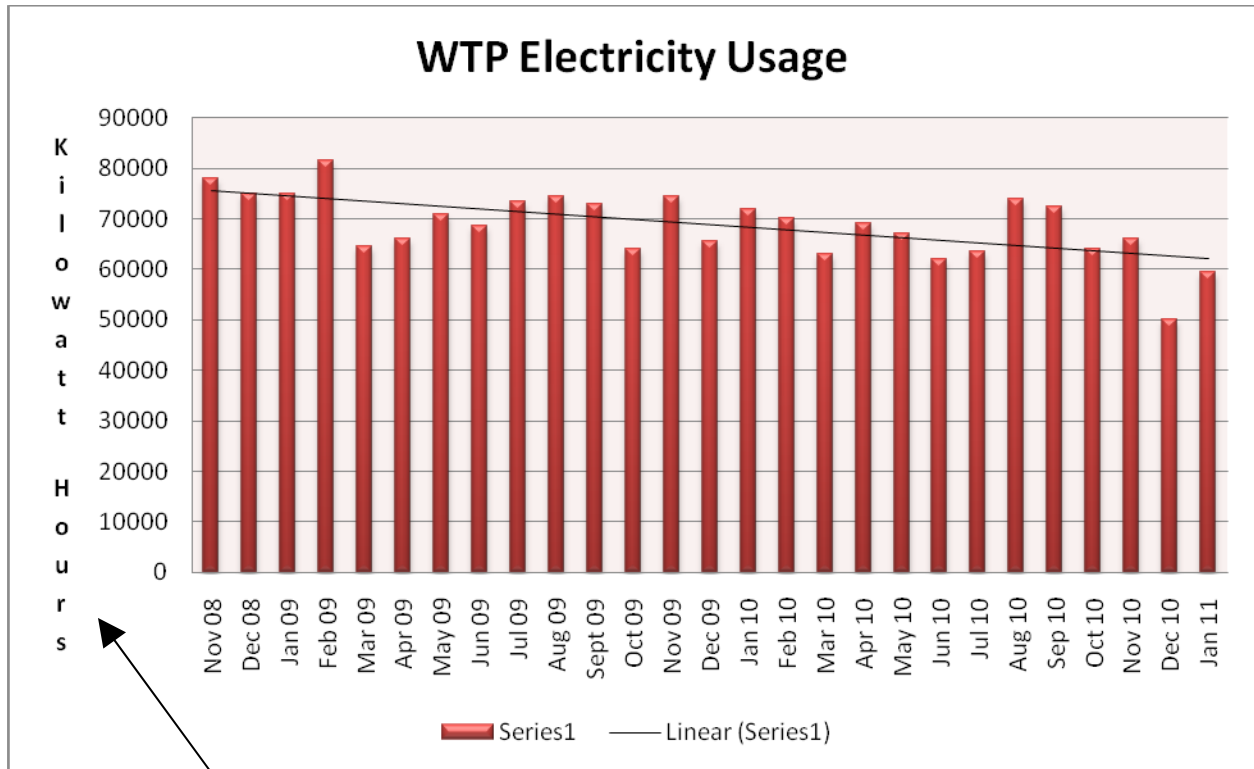


Chlorine is Used for Disinfection  
 The recommended dosage of Chlorine is 1.0 Mg/L



Fluoride is Used for the Prevention of Cavities in Teeth  
 The recommended dosage of Fluoride is 1.0 Mg/L

# Water Treatment Plant



2 Years of Data Showing a Reduction in Power Usage  
Data for February will be on next month's graph

The new water plant transformer is set in place

