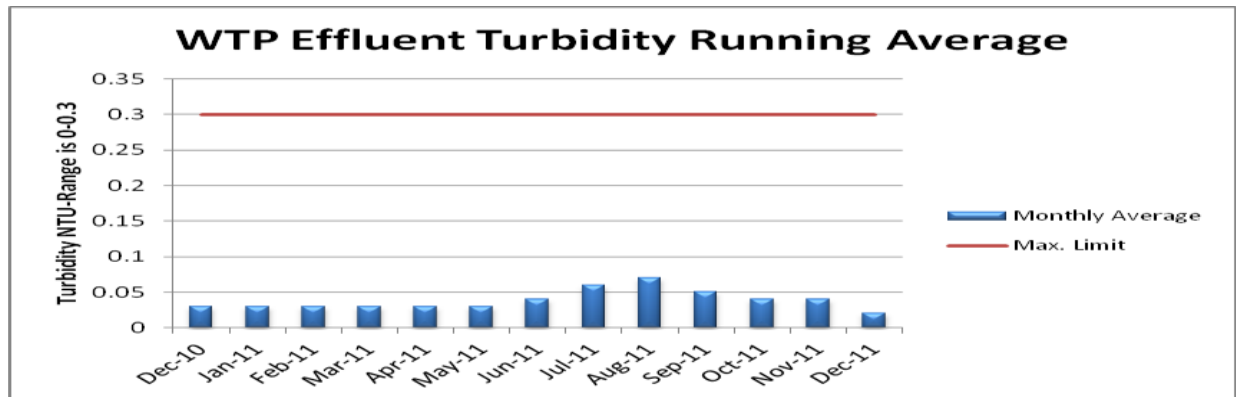
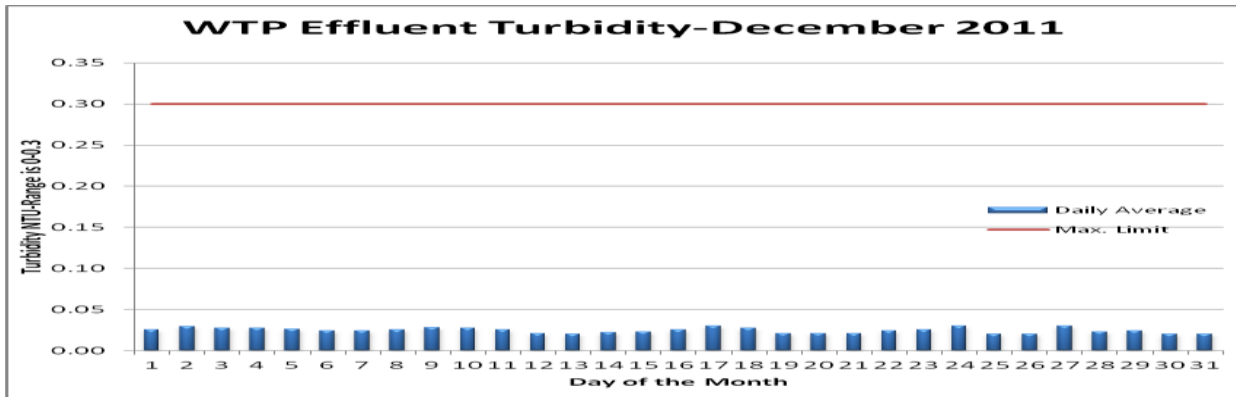
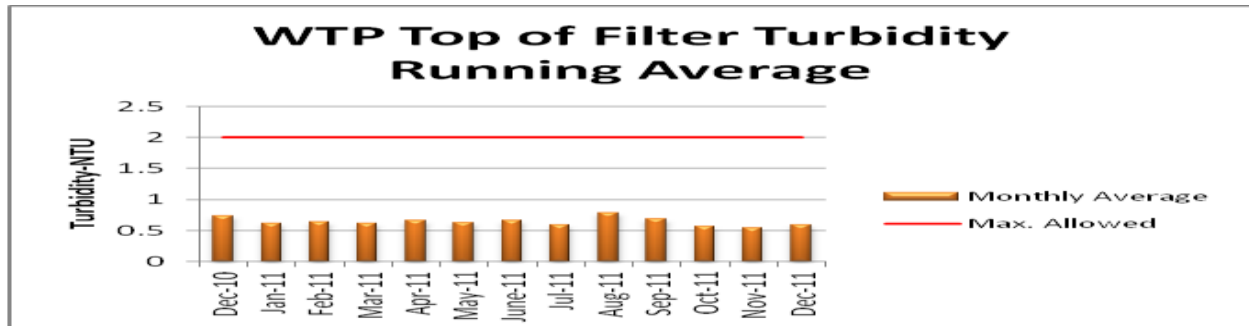
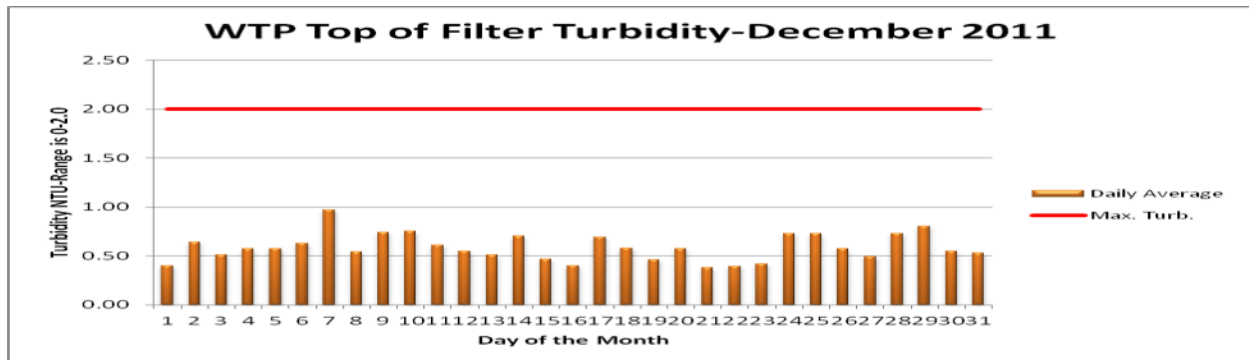


Water Treatment Plant

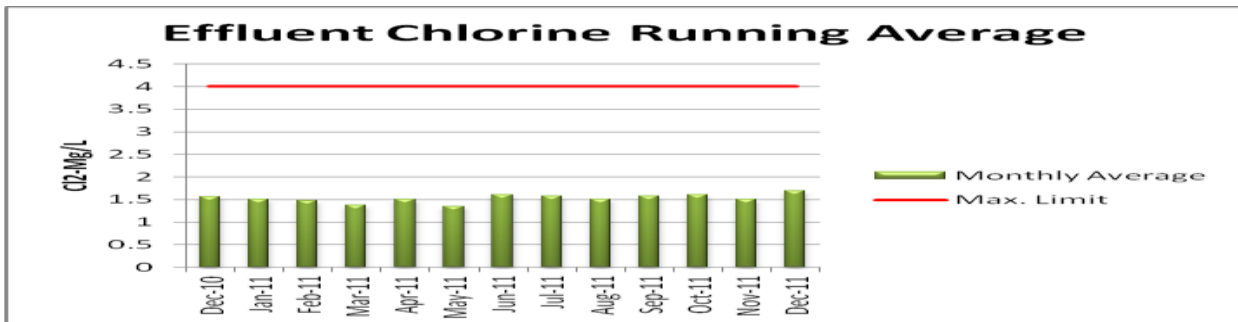
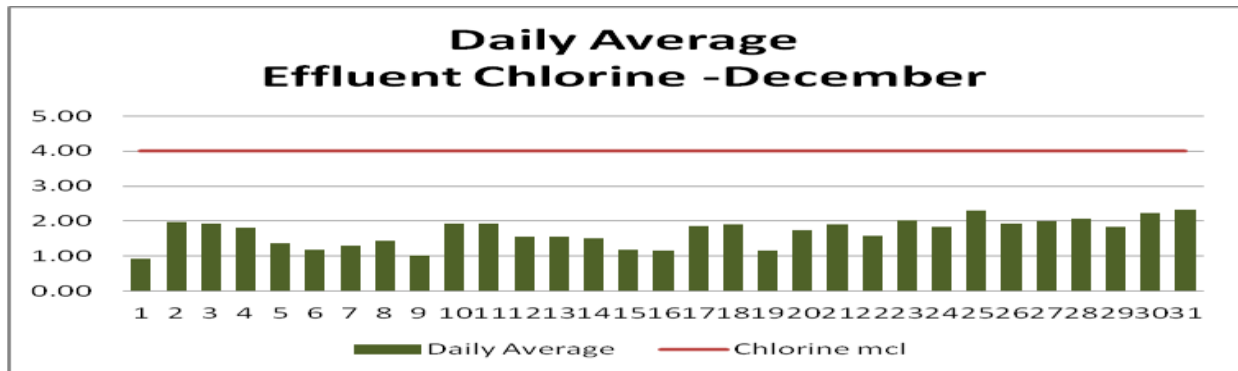


↙ Effluent is the term for the Finished Water Leaving the Plant. Turbidity is the Measurement of the Clarity of the Water.

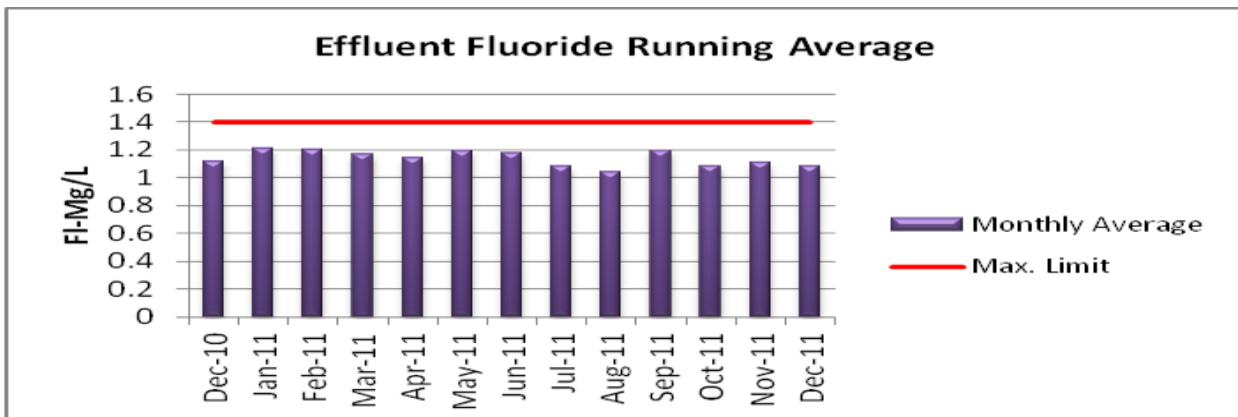
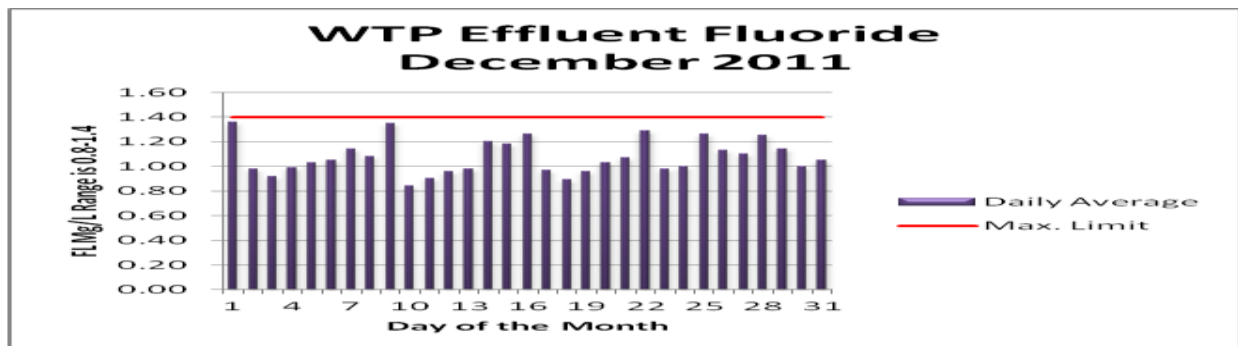


Water Treatment Plant

The "Top of Filter" Turbidity is the Measurement during the Treatment Process.

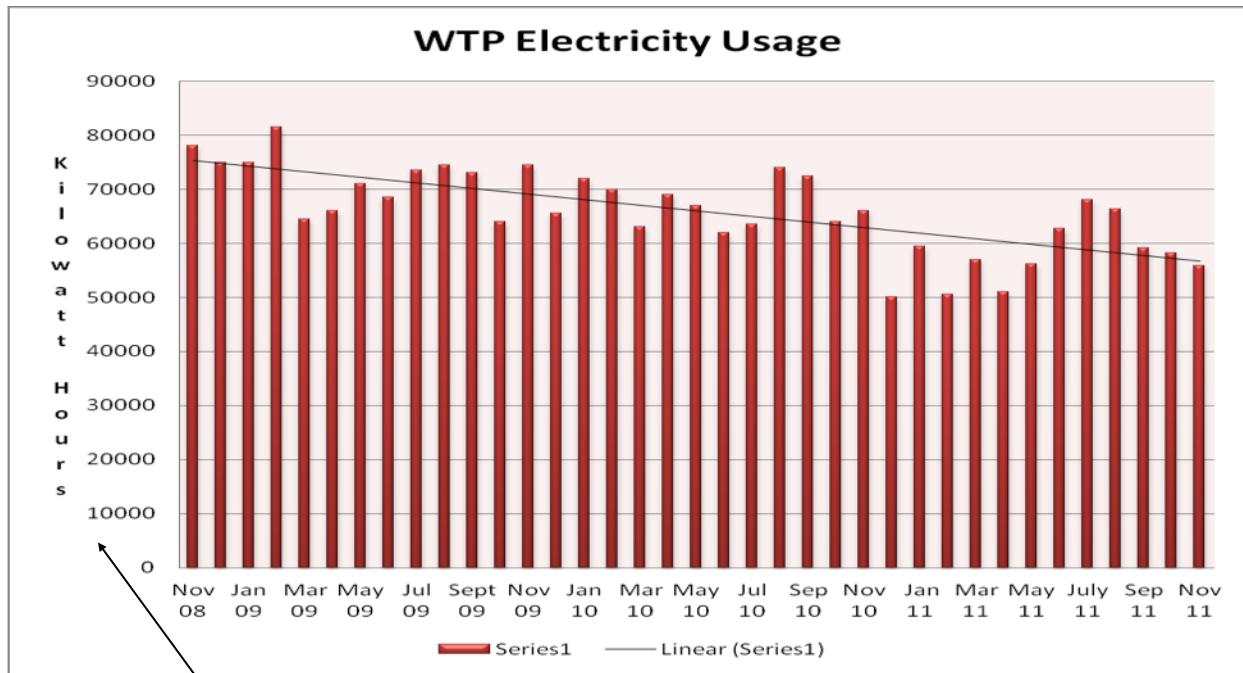


Chlorine is used for Disinfection
 The recommended dosage of Chlorine is 1.0 Mg/L



Water Treatment Plant

Fluoride is Used for the Prevention of Cavities in Teeth
The recommended dosage of Fluoride is 1.0 Mg/L



2 Years of Data Showing a Reduction in Power Usage.
Data for May will be on next month's graph.

The new water plant transformer is now on line.

