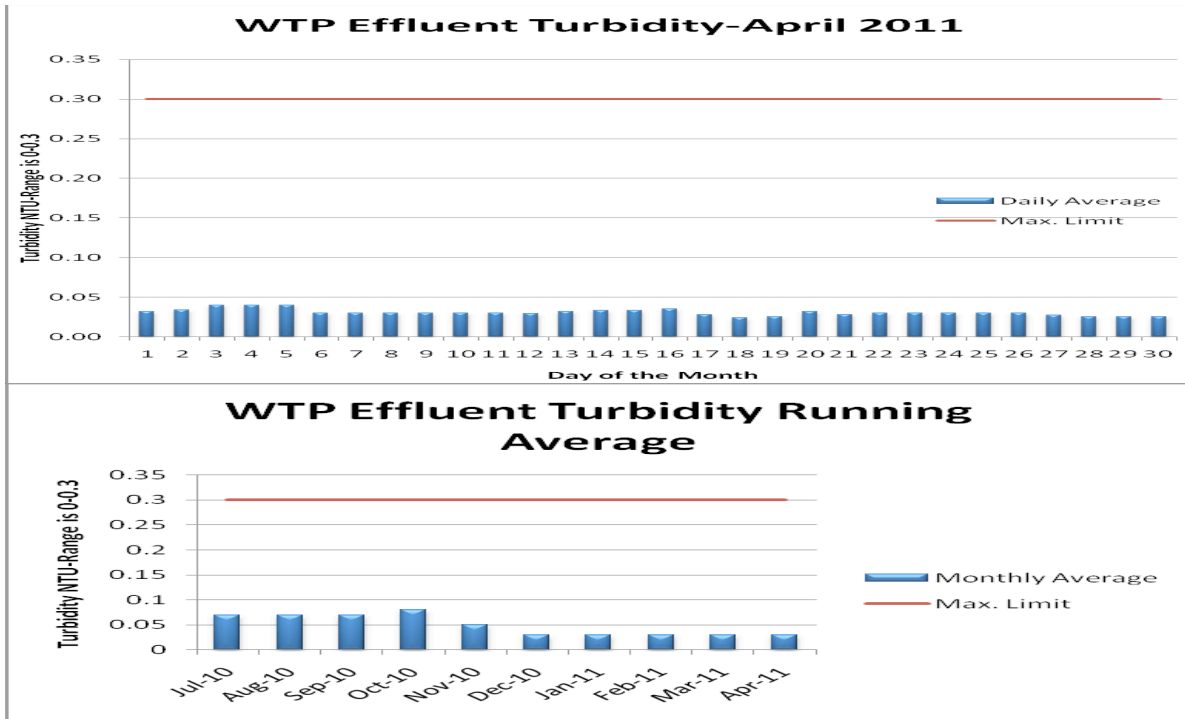
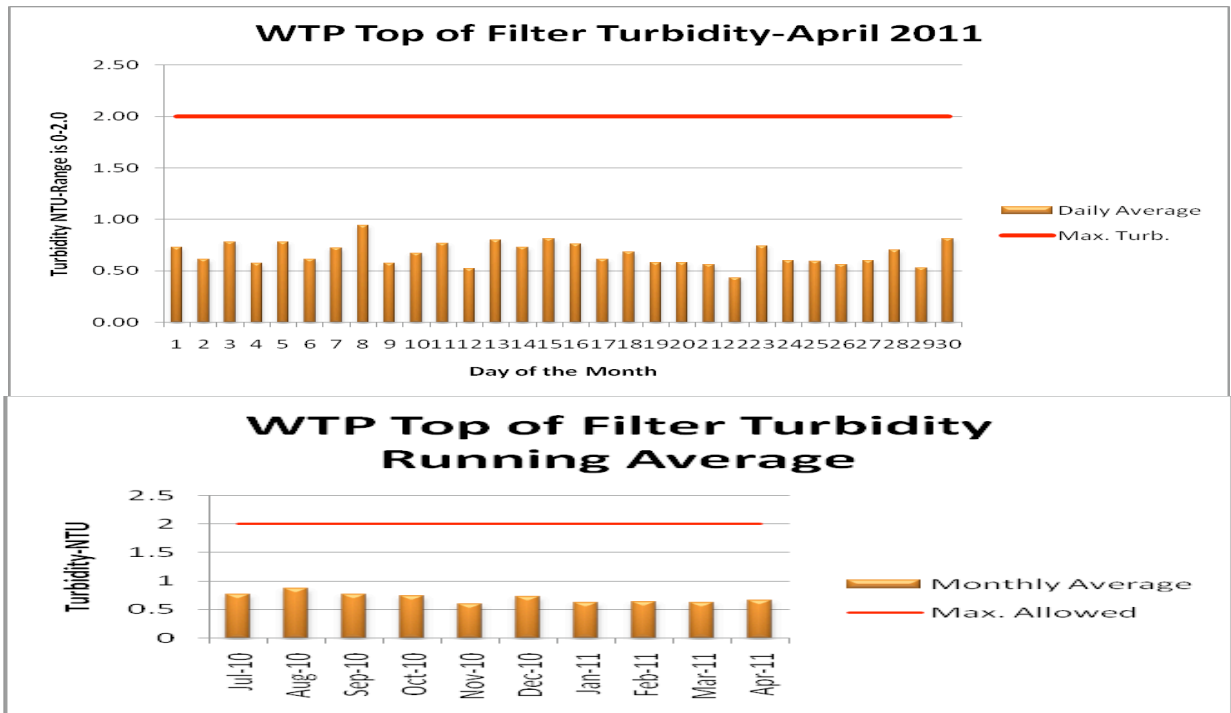


Water Treatment Plant

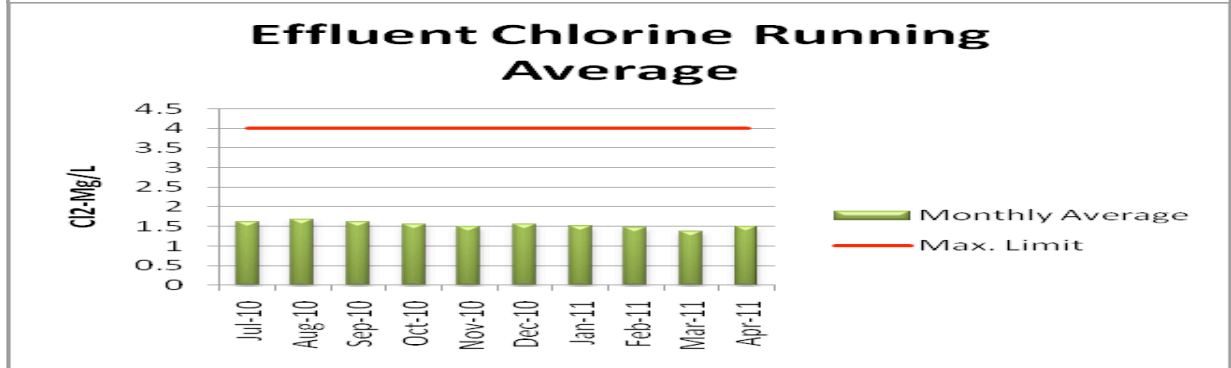
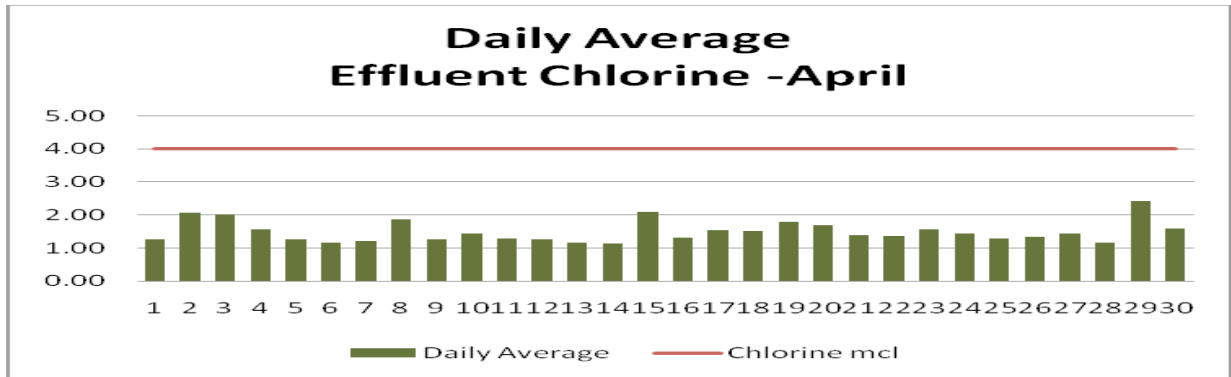


▶ **Effluent is the term for the Finished Water Leaving the Plant. Turbidity is the Measurement of the Clarity of the Water.**

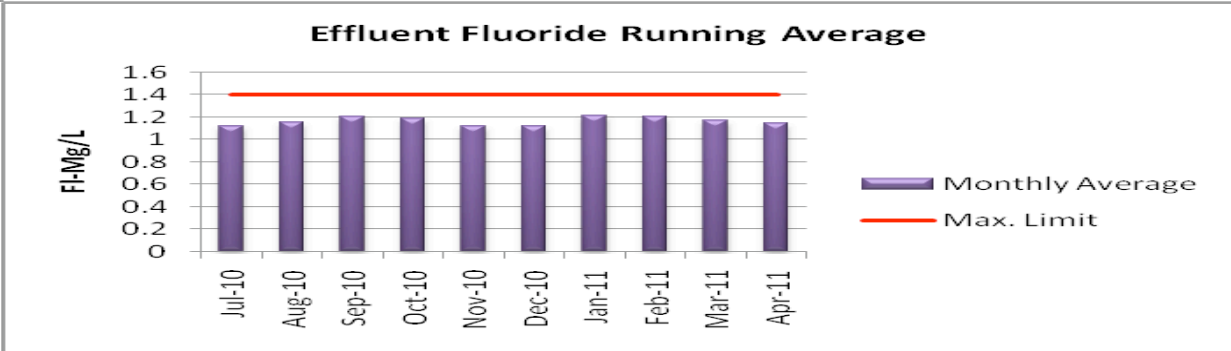
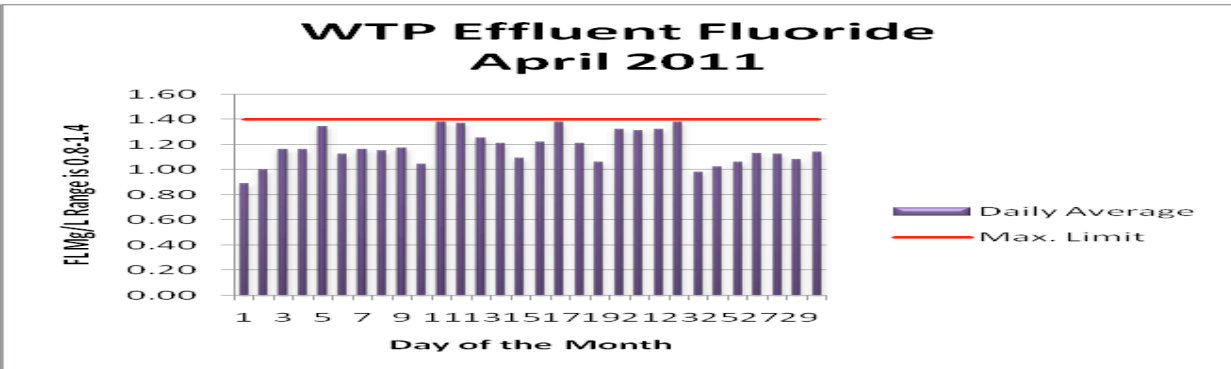


◀ **The "Top of Filter" Turbidity is the Measurement during the Treatment Process.**

Water Treatment Plant

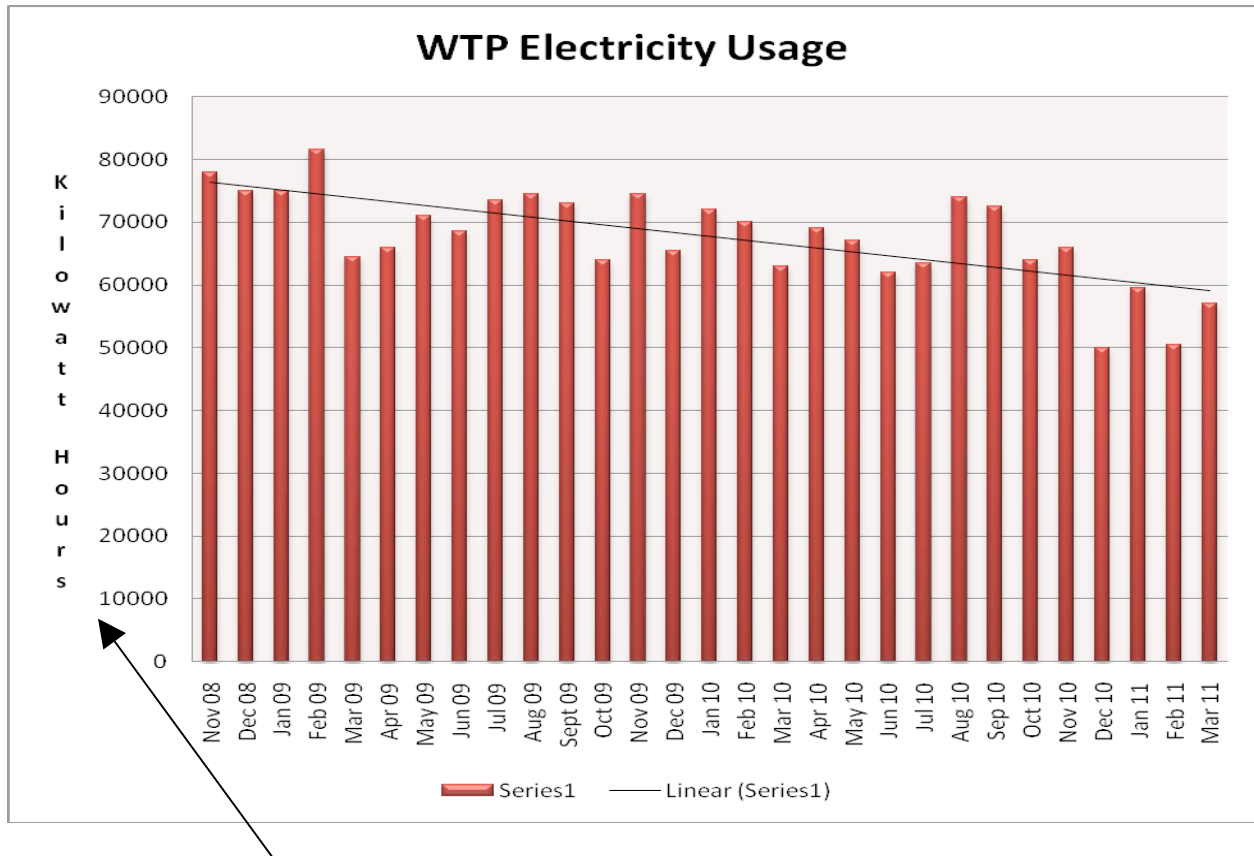


Chlorine is Used for Disinfection
 The recommended dosage of Chlorine is 1.0 Mg/L



Fluoride is Used for the Prevention of Cavities in Teeth
 The recommended dosage of Fluoride is 1.0 Mg/L

Water Treatment Plant
Electricity Usage by the Water Plant
Use of the Variable Speed Drives began in May 2010



2 Years of Data Showing a Reduction in Power Usage
Data for February will be on next month's graph

The new water plant transformer is set in place

